

Model type:
PBAA347FRU

Commercial code:
F073586

General notes

Technical Documentation guidelines

You can find herewith some generic information to simplify consulting of technical documentation:

1. Models of same range share the same exploded views, which report the richest set of spare parts: generally, a model does not necessarily have a related spare part for each particular shown on exploded views.
2. Some spare parts can not be represented directly on the exploded views (instruction booklets, specific kit, etc...). You can find those codes in the spare parts list with the same reference of particular where spares are installed or with references 099, 999. Instruction booklets, once managed, appear with 000 reference.
3. On the higher right site of each exploded view there is a serial number which indicates the beginning of the production of certain range: some models might have more than an exploded view for a given category, each distinguished by a different serial no. and linked to another spare parts list. In this case, serial no. is required to supply the right spare part code. Exploded view to be considered is the one with a more recent serial no. but previous than the one of the model that needs assistance.
4. Exploded views might require further updates even after publishing. Addition of new spares will go on following the already existing numeration references. Revision number of an exploded view is shown into last four digits of serial number into upper right hand corner.
5. The spare parts list associated to an exploded view shows related codes of spares managed for a certain model; for each spare part other informations are available:

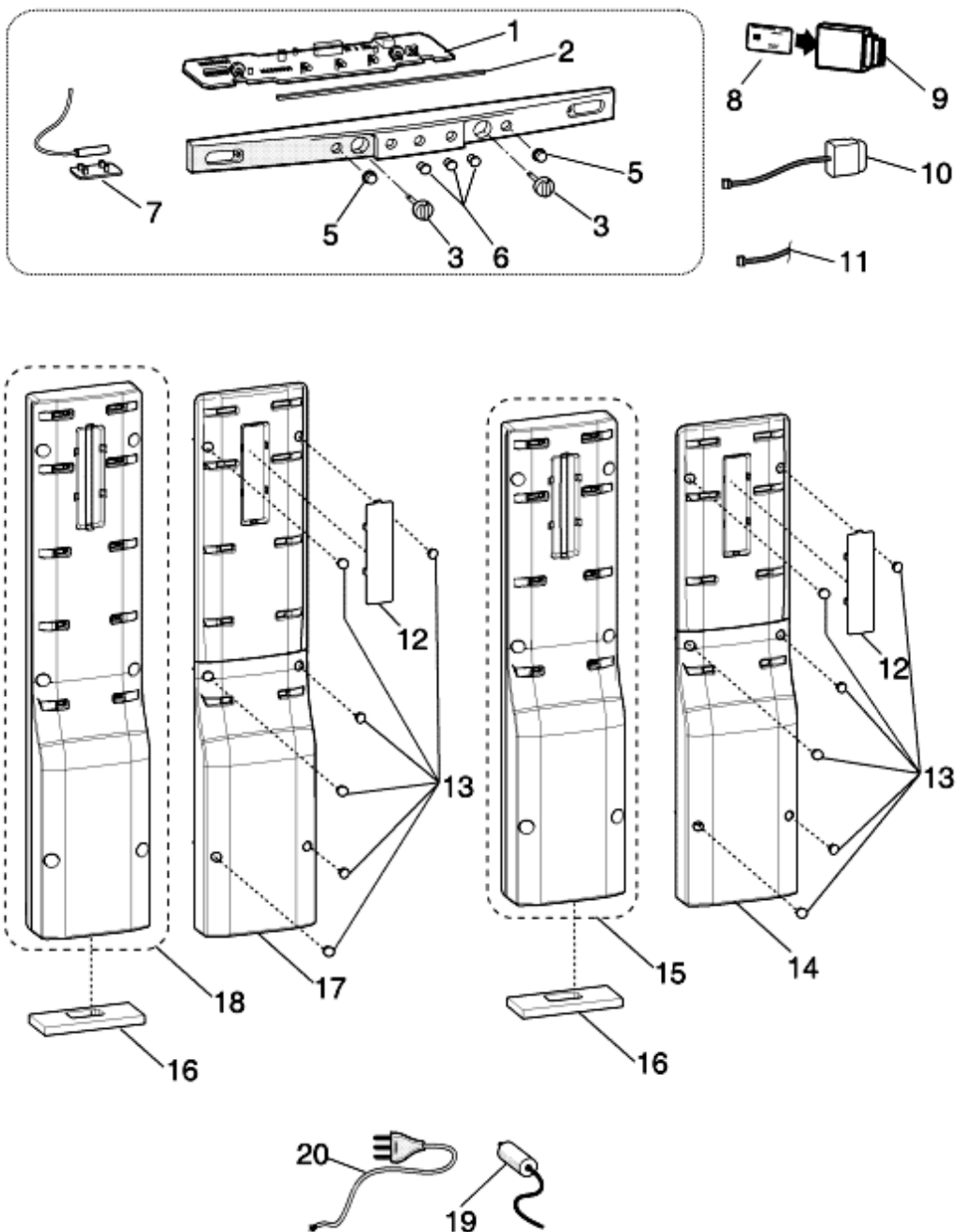
REF: reference no of spare into a table; SUBSTITUTE: list of spare(s) which can replace a code but that keeps same functional characteristics

INDUSTRIAL CODE: list of variables of a model (shown into model label) where such spare is used; NOTICE: code of information(s) to refer to complete technical intervention, track for changes or to find correct spare part code.
6. Some notices, into a same section are generic therefore cannot be directly linked to a spare part. In order to assist a model in the best way as possible, it is helpful to pay attention to all notices and constantly verify documentation updates
7. Technical documentation cover shows model name and its commercial codes

5152370A

Exploded views

**ESSENTIA
COMBY NF ELE**



5152370A

5152370A

Spare parts

list

Ref.	Code	From	To S/N	Substitute	Description	Notice	Industrial
001	C00285495			1 x C00294196	control module artica entry		
002	C00094202				sponge(350x8x8)		
003	C00115431				control knob thermostat - polar		
005	C00118183				buttons cover polar white		
006	C00059921			1 x C00132028	lens (indicator light)		
008	C00286985				card 8kb sw78735790001 pbaa34f		
009	C00272306				smart reader for card 8kb 32kb +		
010	C00255979				hardware key adaptor		
011	C00116134			1 x C00275571	serial cable for the low end		
012	C00284086				label holder blue air control		
013	C00284085				screw cover pw		
016	C00284301				sponge (181x75x15)		
017	C00284159				cover multiflow 955x203		
018	C00284084				set multiflow comby-nf		
019	C00266752				run capacitor 4mf (8mm) p2-uk		34735860100
019	C00271239				capacitor 4 mf p2 uk		34735860101
020	C00008598				mains supply cable 3x0,75		34735860100
020	C00216435			1 x C00216413	mains cable jiax 3x0,75 eu		34735860101
099	C00141321				earth lead		34735860101

Exploded views



51820AA

Spare parts

list

Ref.	Code	From	To S/N	Substitute	Description	Notice	Industrial
001	C00114601				blanking plug (74x20) - polar		
003	C00075565				hinge pin - m8x3 (18+2,5)		
004	C00081644				upper hinge lh-rh		
005	C00114603				head panel hole cover pw rh(with		
007	C00284074				glass rear trim - white		
008	C00284071				glass shelf (478x342x4)		
009	C00284077				glass shelf front trim (478x10)		
010	C00284074				glass rear trim - white		
011	C00284071				glass shelf (478x342x4)		
012	C00284077				glass shelf front trim (478x10)		
013	C00284074				glass rear trim - white		
014	C00284071				glass shelf (478x342x4)		
015	C00284077				glass shelf front trim (478x10)		
017	C00284075				crisper glass rear trim - white		
018	C00284073				glass shelf (478x305x4)		
019	C00284077				glass shelf front trim (478x10)		
020	C00284069				crisper glass rear trim - white		
021	C00284070				crisper cover (478x331x4 no		
022	C00114789				crisper shelf front trim		
023	C00284100				crisper drawer pw (492x436x137)		
024	C00119453				wheel drawer chiller pw		
025	C00119443				wheel chiller slide pw		
026	C00284105				runner drawer right nf pw 357x83		
027	C00284106				runner drawer left nf pw 357x83		
028	C00284101				transparent panel crisper box		
029	C00284453				upper drawer -pw 434x331x166		
030	C00283885				swivel panel assy. prime		
031	C00283737				ice cube container (wxh 372x70)		
032	C00284024				middle drawer pw 434x331x212		
033	C00283741				panel drawer (430x240mm)		
034	C00114730			1 x C00303579	lower drawer (433x227) polar		
035	C00283745				drawer front (430x197mm)		
036	C00255254				base cap pw ar-bigdoor 60		
037	C00255259				base pw ar-bigdoor 60		
038	C00255263				foot - adjustable silver h.56		

51820AA

Spare parts

list

Ref.	Code	From	To S/N	Substitute	Description	Notice	Industrial
039	C00119005				rh-lh lower hinge assy - chromed		
040	C00281425				hinge pin m6x23		
041	C00075566				lower hinge fixing plate (30x40) 6		
042	C00053419				adjustable foot		
043	C00144850				central hinge - chrome		
044	C00284080				probe support		
045	C00114785				blanking plug (4,5x8mm) - polar		
046	C00284078				grate air return essentia		
047	C00266935				control panel (entry segment)		
999	C00266067				leaflet about noisiness		

Exploded views

51821M2

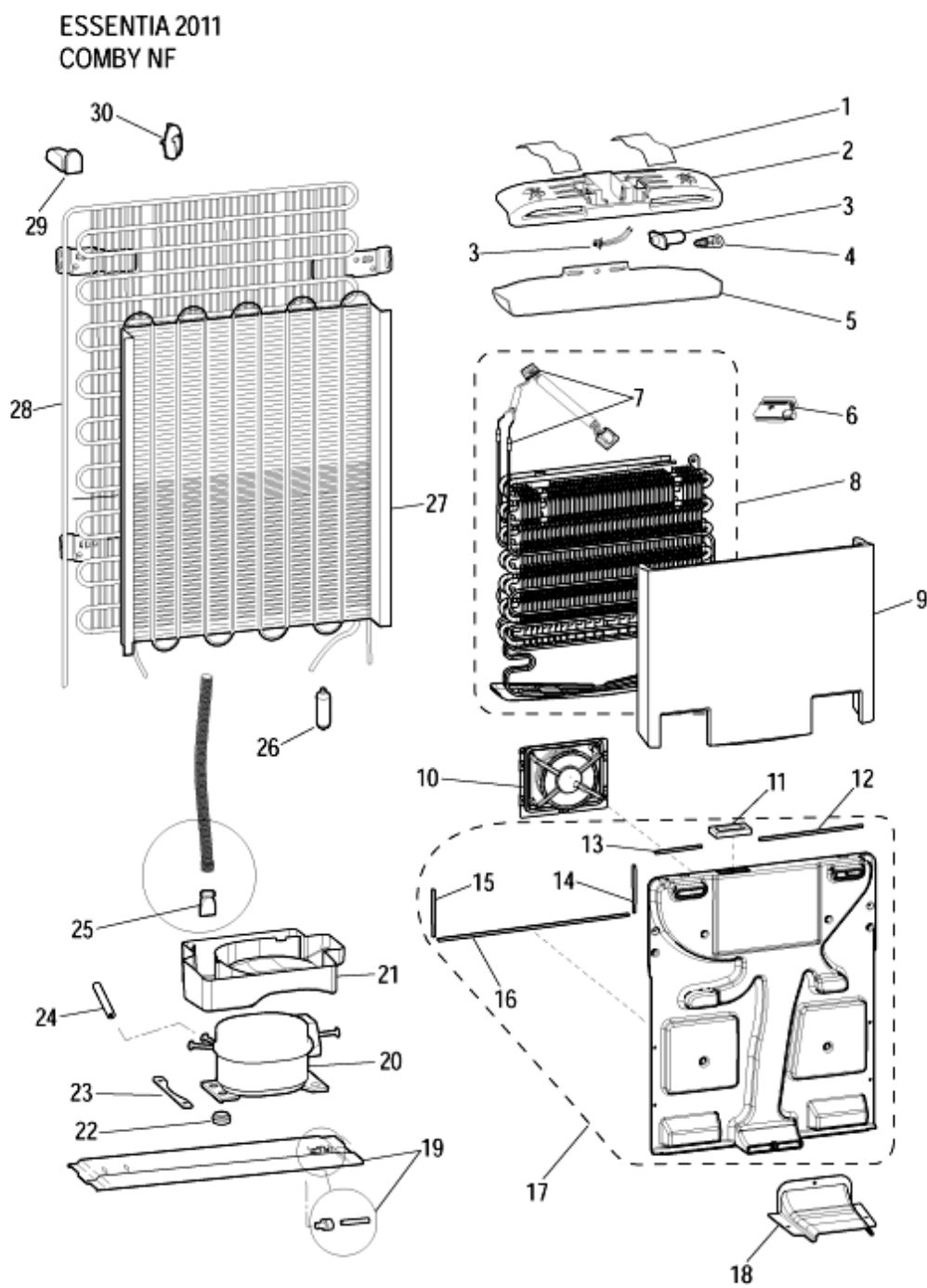
51821M2

Spare parts list

Ref.	Code	From	To S/N	Substitute	Description	Notice	Industrial
001	C00272429				grey hinge bush (ø12x5/ø8.6x14		
002	C00273171				hinge cover 66x27-aluminium		
003	C00255194				central shelf-44 wxh 504x55x170		
004	C00255194				central shelf-44 wxh 504x55x170		
007	C00090981		11012...		egg tray (holds 6 eggs)	n3012b00	
008	C00255194				central shelf-44 wxh 504x55x170		
009	C00255196				shelf trim rail (456x67) pw ha-		
010	C00255195				bottle shelf-44 504x105 ar-big60		
011	C00283883				freezer shelf transp		
012	C00269594				upper door lock left grey		
012	C00282665				auto locking right-neutro grey		
014	C00273122				freezer door pw 592x802x165		
015	C00114661				freezer door seal (552x713mm)		
016	C00273174				blanking plug (h.14 d.13,8/9) -		
017	C00273253				fridge door prime pw 592x1153		
018	C00117963				fridge door gasket (552x1050)		
019	C00273336				door top cover 591x87 polarwh		
020	C00075612				magnetic switch (door stop)		
021	C00277932			1 x C00094380	logo indesit prime chromed		

51822G0

Exploded views



51822G0

51822G0

Spare parts list

Ref.	Code	From	To S/N	Substitute	Description	Notice	Industrial
001	C00054696				lamp reflector h50mmx50mt.x		
002	C00114747				light box (light xtra)		
003	C00066295				lamp-socket (vossloh) 250v e14		
003	C00117209				fridge wiring-amp lamp bulb		
004	C00006522				lamp 15w (e14)		
005	C00114714				lamp cover (max 15w)		
006	C00265203				terminal cover evap		
007	C00284327				heating element+thermalfuse		
008	C00284057		20617...	1 x C00293066	kit fz-evaporator nf-26 pipe(elec)	n3012f0a	
008	C00293066	20618...			kit fz-evaporator nf-24 pipe(elec)	n3012f0a	
009	C00302112				evaporator polystyrene housing		
010	C00284031			1 x C00293162	fan motor assy nmb 12v 2,1w		
011	C00284059				adhesive sponge seal nf		
012	C00284060				sponge(192x5x5)		
013	C00284064				sponge(88x5x5)		
014	C00284064				sponge(88x5x5)		
015	C00284064				sponge(88x5x5)		
016	C00284062				sponge(370x10x10)		
017	C00301993				freezer bottom nf+sponges		
018	C00284058				freezer vent cover cross flow		
019	C00114701				mounting channel 586mm -		
019	C00601728				roller bolt		
019	C00603502				wheel		
020	C00281723				compr.htk95aa3 50 1/5hp-167w		34735860100
020	C00281724				term brd htk95aa acc		34735860100
020	C00282915			1 x C00293587	compr.ns1114y 220-240/50 1/4hp-		34735860101
021	C00283188				adhesive sponge 30x60x3		
021	C00284065			1 x C00301846	defrost water tray 245x175x58		
022	C00032453				rubber shock absorber -		
023	C00008471			1 x C00193590	fixing plate - compressor (750908)		
024	C00043021				service pipe with valve (6 nfmssv)		
026	C00144122			1 x C00266179	dryer r134-600 3ways kit		
027	C00141098				condenser 586x1000x44 (r600)		
029	C00284067				spacer - condenser w=56mm		
030	C00094418				stop mains supply cable		

51822G0

Spare parts list

Ref.	Code	From	To S/N	Substitute	Description	Notice	Industrial
999	C00259270				plug serial		

Notices

n3012b00: EGGS HOLDER ELIMINATED

n3012f0a: EVAPORATOR ASSEMBLY CHANGE

Evaporator assembly has been changed passing from a 26 pipes version to a 24 pipes one.

These assemblies are interchangeable but new one is better for quality improvement so only this last version will be maintained for Service management.

Defrost heater remains the same (longer than new battery) so it is needed to take care in handling of new assembly in order to not damage last two arms of the heater.