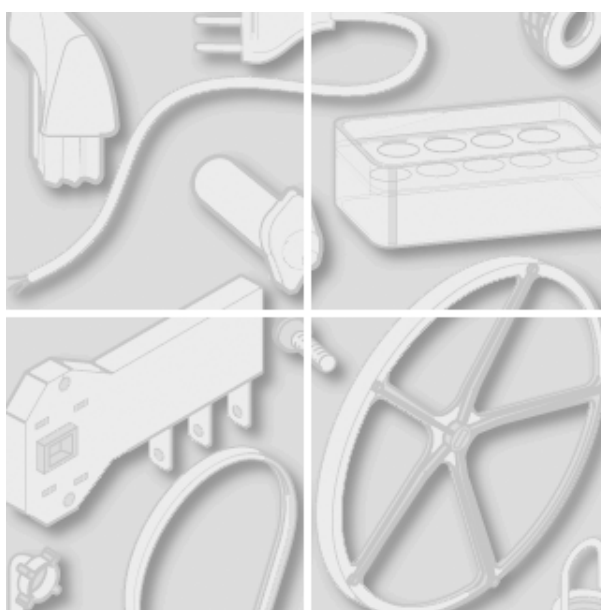


Indesit Company



Model type:
B34FNFSSP

Commercial code:
29777

General notes

Technical Documentation guidelines

You can find herewith some generic information to simplify consulting of technical documentation:

1. Models of same range share the same exploded views, which report the richest set of spare parts:generally, a model does not necessarily have a related spare part for each particular shown on exploded views.
2. Some spare parts can not be represented directly on the exploded views (instruction booklets, specific kit, etc...). You can find those codes in the spare parts list with the same reference of particular where spares are installed or with references 099, 999. Instruction booklets, once managed, appear with 000 reference.
3. On the higher right site of each exploded view there is a serial number which indicates the beginning of the production of certain range:some models might have more than an exploded view for a given category, each distinguished by a different serial no.and linked to another spare parts list, In this case, serial no. is required to supply the right spare part code. Exploded view to be considered is the one with a more recent serial no. but previous than the one of the model that needs assistance.
- 4.Exploded views might require further updates even after publishing. Addition of new spares will go on following the already existing numeration references. Revision number of an exploded view is shown into last four digits of serial number into upper right hand corner.
- 5.The spare parts list associated to an exploded view shows related codes of spares managed for a certain model; for each spare part other informations are available:

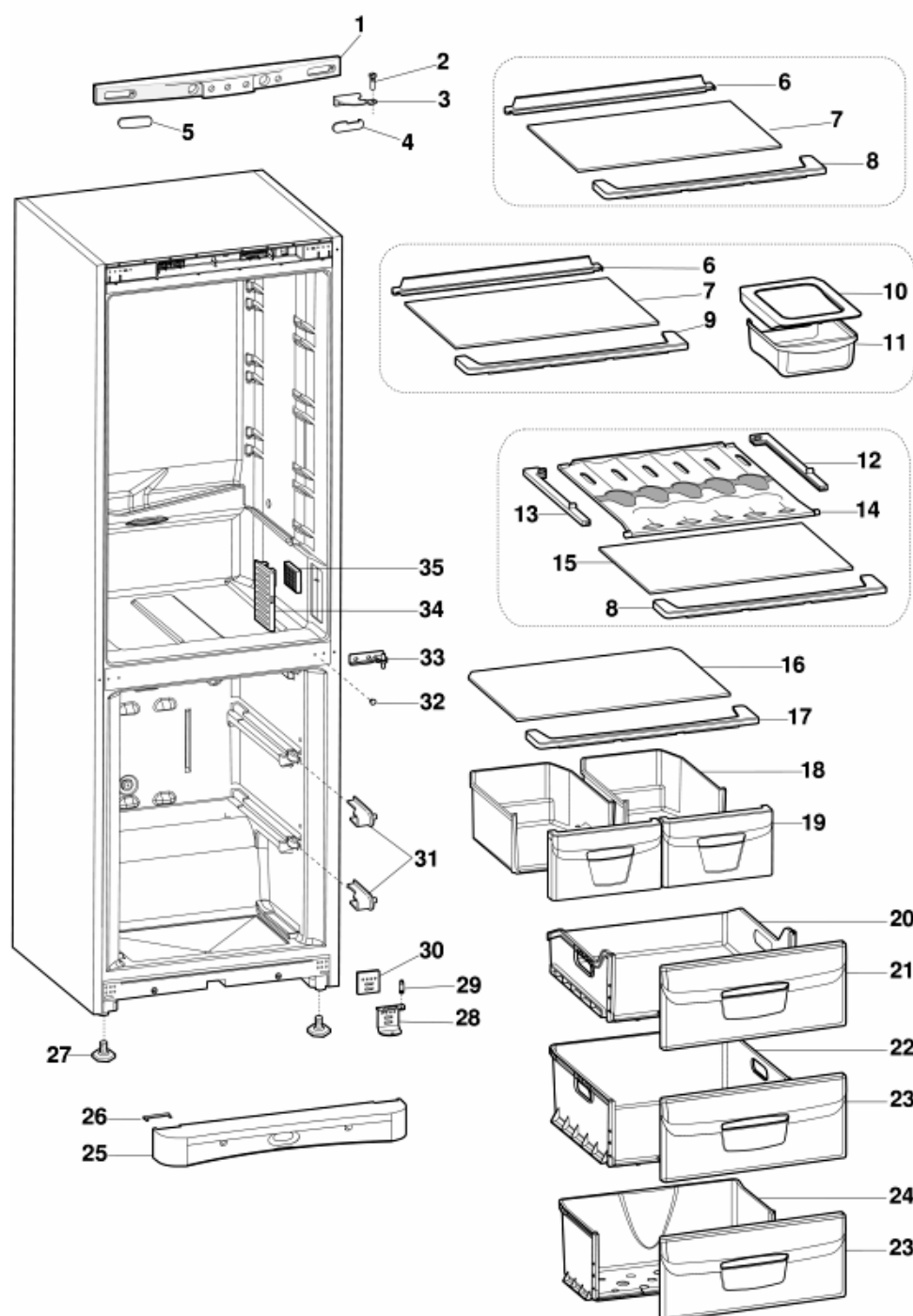
REF: reference no of spare into a table; SUBSTITUTE: list of spare(s) which can replace a code but that keeps same functional characteristics

INDUSTRIAL CODE: list of variables of a model (shown into model label) where such spare is used; NOTICE: code of information(s) to refer to complete technical intervention, track for changes or to find correct spare part code.
6. Some notices, into a same section are generic therefore cannot be directly linked to a spare part. In order to assist a model in the best way as possible, it is helpful to pay attention to all notices and constantly verify documentation updates
- 7.Technical documentation cover shows model name and its commercial codes

51520d0

Exploded views

Matr. 30415.0001



51520D0

51520d0

Spare parts list

Ref.	Code	From	To S/N	Substitute	Description	Notice	Industrial
000	C00094739				instruction booklet uk-d-es-i-pt		
000	C00109710				instruction booklet ro-sl-sb-gr		93297770201
001	C00095802				control panel-top cover(nofrost)		
002	C00075565				hinge pin - m8x3 (18+2,5)		
003	C00081644				upper hinge (m8) lh-rh cromed		
004	C00078446				hinge surround (74x20) - silver		
005	C00078447				blanking plug (74x20) -		
006	C00094447				back glass section w.497 white		
007	C00094449				glass shelf 493x336,5x4 indesit		
008	C00094444				front glass section w.530 white		
009	C00094445				front glass section w.530 white		
010	C00094453			1 x C00116467	chiller cover (wxd) 245x334x31		
011	C00094450				chiller box drawer (240x273x100)		
012	C00094735				guide (right) play zone white		
013	C00094736				guide (left) play zone white		
014	C00094732				shelf play zone blue 496/471x306		
015	C00094726				glass shelf 493x336,5x4 play zone		
016	C00094691				crisper cover (499x334x4 2x450)		
017	C00094432				trim - glass crisper cover		
018	C00075590			2 x C00096115	crisper box (wxhxd		
019	C00094433				panel crisper box wxh 246x160		
020	C00094442				upper drawer -(wxd 444x398) -		
021	C00094718				panel drawer - wxh 440x197		
022	C00075593				middle drawer -(wxdxh		
023	C00094439				panel drawer - wxh 440x197		
024	C00075594				lower drawer - white wxdxh		
025	C00094954				front base moulding indes03 -		
026	C00094953				grey base cap 58x18x4mm		
027	C00053419				foot 17,7x37,5 adjustable		
028	C00076614				lower hinge assy(m6) rh-lh -		
029	C00017658				hinge pin m6x13,5		
030	C00075566				fixing -lower hinge 30x40 (6		
031	C00075596				evap.fixing plastic right		
031	C00075597				evap.fixing plastic left(tos)		
032	C00007749				hole cover grey d,4,5x3 mm		

51520d0

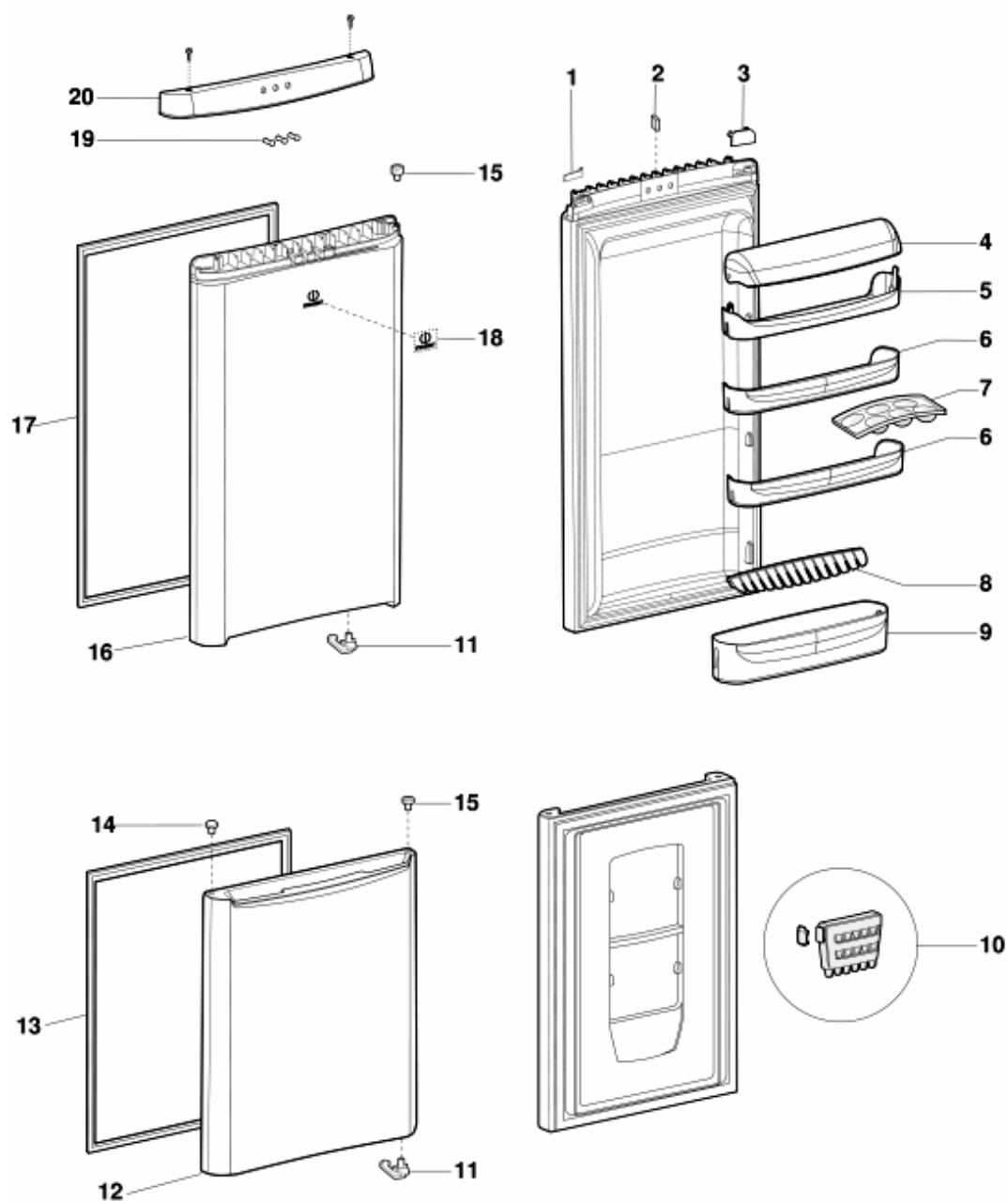
Spare parts list

Ref.	Code	From	To S/N	Substitute	Description	Notice	Industrial
033	C00053838				central hinge - chrome		
034	C00094429				cover air return rh white		

51521e0

Exploded views

Matr. 30415.0001



51521E0

51521e0

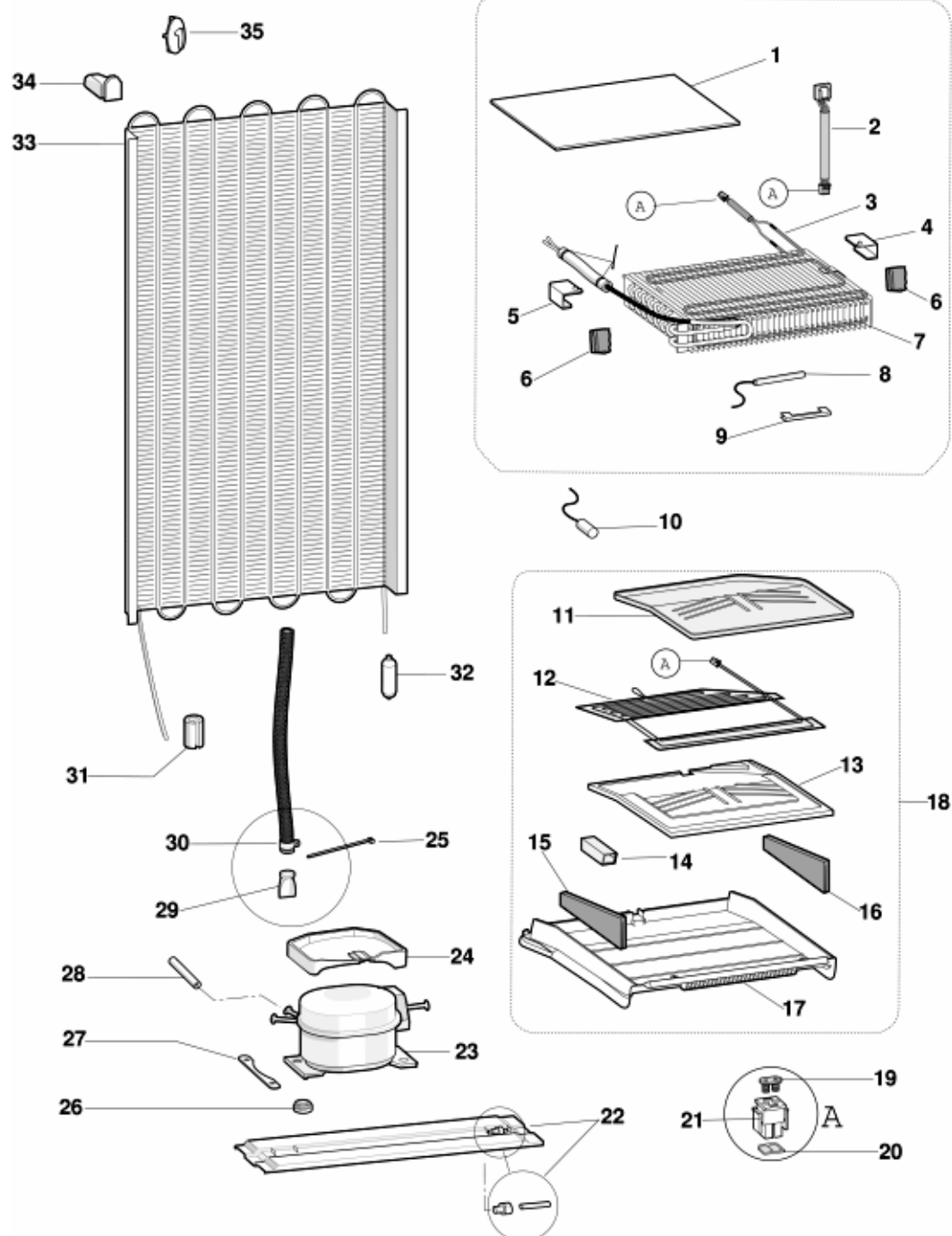
Spare parts list

Ref.	Code	From	To S/N	Substitute	Description	Notice	Industrial
002	C00075612				magnetic switch (door stop)		
003	C00094748				hinge surround lh 66x27 - grey		
004	C00094417				eggs compart. door blue		
005	C00094416			1 x C00081942 1 x C00081948	shelf eggs wxh 486x64x112		
006	C00094415				central shelf wxh 486x6x112		
007	C00076539			1 x C00114690	eggs tray (6) - white		
008	C00081955			1 x C00114685	shelf trim rail (423x39) white		
009	C00094410				bottle shelf 486x104x135 light		
010	C00075560				ice cubes container (indesit00)		
011	C00082894				door stop bush lh - grey 49ø		
011	C00082899				door stop bush rh - grey 49ø		
012	C00094740				freezer door assy 592x713x87		
013	C00075531			1 x C00115566	freezer door gasket (554x682)		
014	C00057321				blanking plug (h.14 d.13,8/9,5) -		
015	C00014155				grey door bush 3 mm'salvagnini'		
015	C00016387				hinge bush 4mm - grey		
016	C00094743				fridge door 592x1137x103- silver		
017	C00076126			1 x C00115396	freezer door gasket (554x1051)		
018	C00094380				logo indesit chromed		
019	C00095258				indicator light grey56 (indesit-03)		
020	C00095803				control cover (door top) 593x54-		

51522e0

Exploded views

Matr.30415.0001



51522E0

51522e0

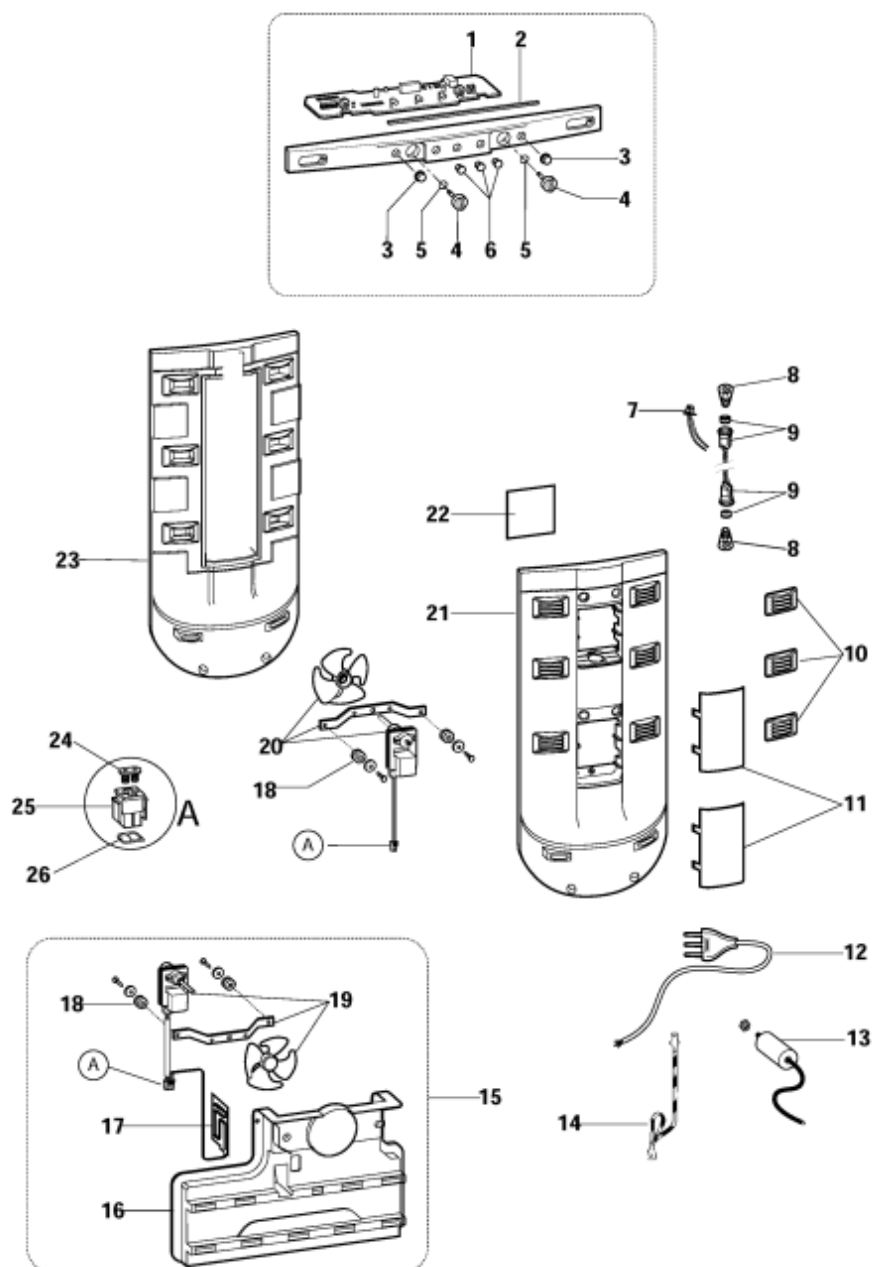
Spare parts list

Ref.	Code	From	To S/N	Substitute	Description	Notice	Industrial
002	C00094665			1 x C00196989	fuse-m tf0410012 72°c 220v(amp		
003	C00094663				no-frost evap.resis.140w 240v		
004	C00094498				evaporator-nf back fixing plastic		
005	C00094500				evaporator-nf back fixing plastic		
006	C00094463				evaporator sponge seal		
007	C00094667			1 x C00113845	set freezer evaporator nofrost r600	n1030085	
007	C00113845				set freezer evaporator nofrost r600		
009	C00059949				retainer - probe bulb sensor		
012	C00094469				defrosting gutter resist. 47,6w	n1030069	
014	C00094472			1 x C00145089	defrost water raceway		
015	C00094468				separator sponge seal lh	n1030068	
016	C00094467				separator sponge seal rh (250x26)	n1030068	
018	C00094485			1 x C00097661	set shell freezer separator no frost	n1030069	
018	C00144883				kit pipe aluminium l=71,6 (17x23)	n1030101	
022	C00013997				mounting channel 586mm -		
023	C00094402			1 x C00054788	compr. htk12aa 220-240/50 1/4hp-		93297770100
				1 x C00099146			
023	C00099146				compres. danf. nle13kk3 220-		93297770101
							93297770201
024	C00054788				defrost water tray - (plastic)		93297770101
							93297770201
024	C00094407				defrost water tray zanussi (nf)		93297770100
025	C00032492				fixing-clamp fastex (2007691100)		
026	C00032453				rubber shock absorber -		
027	C00008471				fixing plate - compressor (750908)		
028	C00043021				service pipe with valve (6 nfmssv)		
029	C00028100				non return valve - defrost water		
030	C00095021				connector - defrost pipe/non		
032	C00045265				filter gr.12 (d.1,95/d.4 mm) gas		
033	C00023282				condenser h=1000+200x591		
034	C00015332				spacer - condenser		
035	C00094418				stop mains supply cable		

5152330

Exploded views

Matr. 30415.0001



5152330

5152330

Spare parts list

Ref.	Code	From	To S/N	Substitute	Description	Notice	Industrial
001	C00094383				card micropr	n1030060 n1030068 n1030075	
002	C00094202				sponge(350x8x8)		
003	C00085285				buttons cover grey-446 (h=5,5		
004	C00078476				trimmer knob silver-647 (c238)	n1030066	
005	C00064775				gasket oring dia=11/8 mm		
006	C00059921				lens (indicator light)		
007	C00094688				fridge wiring-amp lamp bulb		
008	C00060617				lamp bulb 10w (e14)		
009	C00094952				lamp-socket (vossloh) 250v e14		
011	C00174888				lamp cover-fridge		
012	C00008598				mains supply cable 3x0,75		
013	C00090222			1 x C00144815	capacitor 4mf (ducati)		
015	C00094490				set air conveyor nofrost-60	n1030067 n1030068	
017	C00095014				set fan-motor/defrost heater kit		
018	C00046806				rubber anti shock bush - fan motor		
020	C00094660			1 x C00095800	fan-motor f6410 220v 3,5w(amp-		
021	C00094737			1 x C00111030	multi-flow cover l70 arst(kit)	n1030068 n1030079	
021	C00111030			1 x C00117071	multi-flow cover l70 arst(kit)		
022	C00094669				light deflection folio (80x100x0,1)		

Notices

n1025093: Doors / weather stripping combined fridges / freezers Indesit/2000 Melano and Setubal

With the exception of the model R45, width 700 mm produced in Turkey (Manisa), on all the combined fridge and freezer models in the Indesit (range 2000), width 600 mm produced in Italy (Melano) and in Portugal (Setubal), Poland (Lodowek) the doors handled as replacement are without weather stripping because this is no longer blocked between door and counter-door. The weather stripping has a new profile and is located in the housing resulting along the external perimeter of the counter-door, where it is threaded through by simple hand pressure. To remove the weather stripping it will suffice to unthread it from its housing without any other operation.

Therefore in case of replacement of the door the weather stripping may be recovered from the existing door, however the weather strips are handled singularly as a spare part.

n1030020: Replacement of NTC sensors on latest generation of "cold product line" models

(KRF 310VE - KRF330VE - KRF310VNFE - KRF330VNFE), including the new combo appliances in the Indesit-2000 range (C238 e C240), Ariston-2001 (MBA3831-4031- 4231 ; MBA3841 - 4041) on static or no-frost "cold product line" models of the latest generation electronic version, the NTC sensors cannot be replaced because they are blocked within the cabinet. This decision is due to the low faultiness of the component and to the high guarantees of operation in foam-insulated environments.

The exceptions to the aforementioned are the upright Ariston electronic 600 mm wide freezers, rounded aesthetics, Ariston models EUP300XEU - EUP350XEU - TUP300XOM (including deriving versions) where the sensor can still be replaced in the event of a fault.

Where the replacement of the product is deemed necessary by the probe defect, then it is important to closely check that the problem is determined by the probe and not by the electronic card.

In order to check the correct operation of the probe it is possible to measure the resistance of the wiring harness terminals that must present the following values :

- temperature of + 20 °C = about 2.000 ohm (air probe at environment temperature)
- temperature of + 5 °C = about 7.000 ohm (fridge air probe)
- temperature of - 18 °C = about 23.000 ohm (freezer air probe)

Also, in a less technical manner, replacing each probe on the electronic card (at room temperature) in a "steering" manner, checking the elimination of the problem (if the compressor starts the probe is defective).

N.B. the probes are identifiable by their coloration (marking) placed on the probe and its wiring harness :

- fridge evaporator probe (black marking)
- fridge air probe (brown marking)
- freezer air probe (white marking)
- freezer evaporator probe (no-frost) end of defrost (light blue marking).

n1030034: Magnetic switch on combined electronics Ariston-Indesit range - 2000

On combined electronic models (Ariston and Indesit, range 2000) on the base of the door's dashboard of refrigerator, there is a magnetic switch assembled (075612) with a rectangular shape that must be inserted on the appropriate hole in the narrow side (the position is compulsory for the stop and the correct function of the product).

The missing of the magnetic switch can cause the following inconvenient with open or closed door:

-If the product has being lit for more than 3 minutes and if magnet is missing, the lamp flashes (if is not broken) as soon as the door opens.

So, in case of substitution of the fridge door, to avoid this inconvenient, together with the dashboard and the moulding, the magnetic switch must always be rescued.

From the end of July the production Dpt. will supply as spare parts the fridge doors of combined electronics, already included with the magnetic switch.

(Anyway please verify always its presence).

n1030060: Self-test for initialising the new electronic power cards

On Ariston-Opera-60/70 and Indesit 2000 range electronic models, including 2000 range built-in fridge-freezers, it is very important to do the self-test whenever the power card is replaced.

This must be done to check correct operation of the card and to correctly initialise the algorithms.

If the SELF-TEST is not carried out on Partial no-frost and Total no-frost (double door or free standing/built-in fridge-freezers) models, the first defrost cycle will not be executed correctly; it will be carried out only 30 days after card replacement.

The list of relevant Sat codes with information sheet for the self-test is attached to this note.

089830 = (143691 rohs)CARD 4084-02/GREEN 70-nf vfd/fip
089831 = (143683 rohs) CARD 4085-02/pink (L70NF 2 digits)
095779 = (143693 rohs)CARD (MAGNETEK 4087/GREEN) 220-240/50
094383 - CARD (MAGNETEK 4088/ORANGE) 220-240/50
095711 - CARD PANEL.4087/YELLOW DISPLAY VERS.
089759 - CARD (MAGNETEK 4083/PINK) 220-240/50
096661 = (143689 rohs) CARD PANEL. 4068/PURPLE (L70NF ARS/IND.)
098024 = (143091 rohs) CARD (MAGNETEK 4083/PINK) 220-240/50 REPLACED

n1030066: Modification of trimmer knob on Ariston Opera-60 and Indesit fridge-freezers

In November 2003 (serial no. 31101.0001) the Melano factory replaced the control panel knob with rear expansion on Ariston Opera-60 and Indesit fridge-freezers (see fig.1).

This modification solves the problem of card damage and facilitates removal, that previously was only possible using tweezers. With the new solution the knob locks on the control panel and not on the card trimmer.

For disassembly or removal, the knob must always be set (as the previous one) to stop = dot (see fig. 2).

This is necessary in order to fit or extract the knob pin from the trimmer without damaging it, after which the knob can be set to the desired operating position.

To remove the knob from the trimmer, lightly press the pin; when refitting, protect the trimmer with fingers to avoid damaging the card.

When working on the card or control panel make sure to always insert the card before fitting the knob.

The new knobs can also be fitted on premodification models; Service codes will remain the same, after replacing stocks.

080610 - TRIMMER KNOB BROWN-18

080611 - TRIMMER KNOB YELLOW (mass)

084424 - TRIMMER KNOB YELLOW-1003 (varnished)

082976 - TRIMMER KNOB ALUMINIUM-MET

083769 - TRIMMER KNOB SILVER

082116 - TRIMMER KNOB BLUE

078476 - TRIMMER KNOB SILVER- 647

075608 - TRIMMER KNOB WHITE replaced with 175020

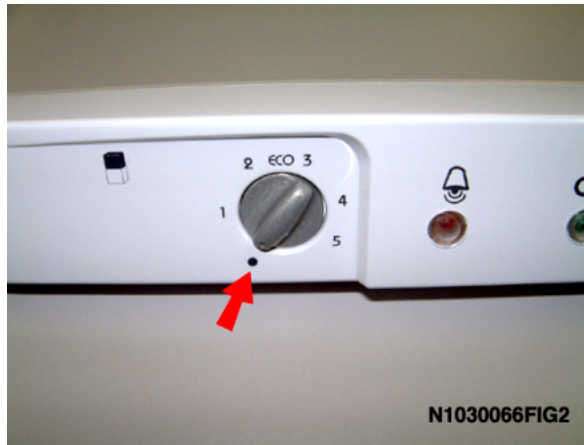


n1030067: Noisy freezer compartment fan in Ariston and Indesit Opera-60 total no-frost fri

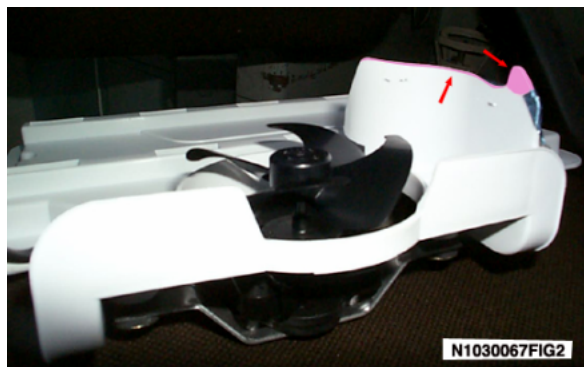
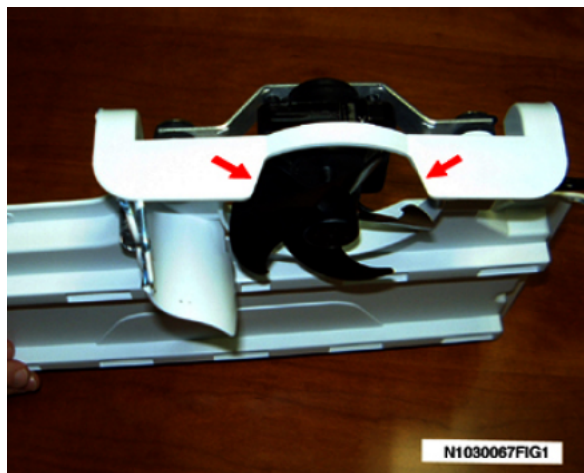
On Ariston and Indesit Opera60 Total No Frost fridge-freezers produced before August 2003, the freezer fan may stop due to ice build-up (stalactites), activating the alarm.

The problem has been solved by emptying the conveyor (chamber separator) in the upper part to give the fan more space (see fig.1).

To solve the problem in products in use, an air conveyor kit (Sat code 094490), which also includes modifications to reduce



dispersion air flow, has been introduced since 25/9/2003 (see fig.2) and 06/10/2003 (see fig.3).



n1030068: Low fridge compartment temperatures in Ariston and Indesit Opera-60 Total No Fro

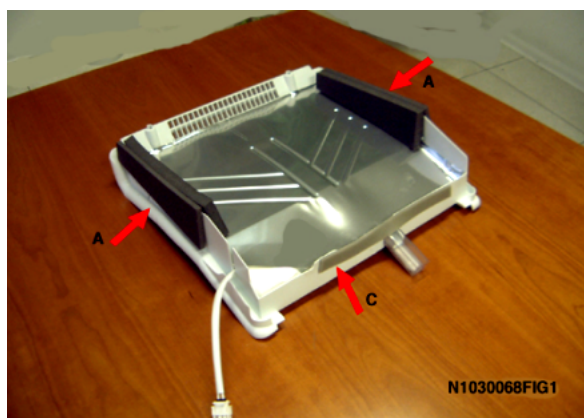
In Ariston and Indesit Opera-60 Total No Frost fridge-freezers produced before June 2003, there may be a lowering of the fridge compartment temperature in the crisper area (with freezing of food) due to the backflow of cold air from the freezer.

This problem generally occurs when the "super freezer 24 or 48 hours" function is set.

The problem has been solved as follows:

- 1) The "Super freezer-24 hours" power card software has been modified. The power cards managed as spare parts (095711 - 094383) were all replaced on 01/06/2003.
- 2) The lower vents on the multiflow have been closed from the inside (see fig.3/4-ref.A) and the outlet of those located in the curved area has been reduced (see fig.3/4- ref.B). To solve the problem on products in use there are two spare part kits: 094675 for the version with three outlets, and 094737 for that with four.
- 3) The two side sponges on the freezer separator have been lengthened (see fig.1-ref. A) and another has been fitted at the back, in the outlet hole area (see fig.1-ref C). Kit 097661 is managed to solve the problem on products in use. This kit includes a double filament resistance (see note N1030069).
- 4) The air conveyor has been modified to improve air circulation (see N1030067 fig. 2-3). Kit 094490 is managed as a spare part to solve the problem on products in use

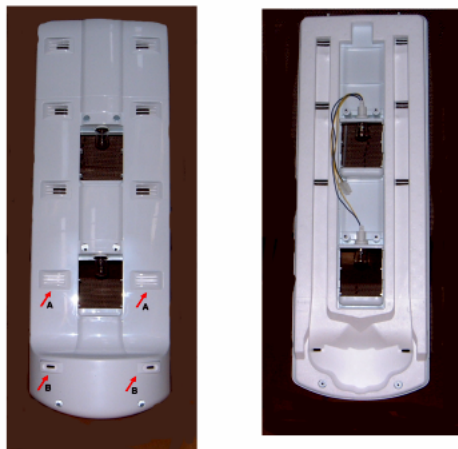
The models affected by this problem are all those produced between serial nos. 30523.0001 and 30614.0001 for the card software modification; and between 30523.0001 and 30728.001 for the multiflow modification.





KIT 094675

N1030068FIG3



KIT 094737

N1030068FIG4

n1030069: Freezer compartment drip hole obstructed on Opera60 Total No Frost fridge-freeze

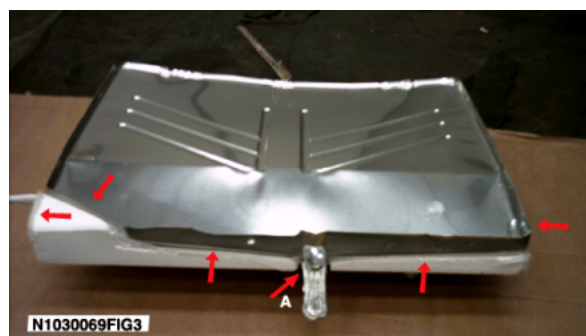
On Ariston and Indesit Opera60 Total No Frost fridge- freezers produced before June 2003, the freezer separator drip hole may be obstructed due to ice build-up.

The problem has been solved by fitting a double filament resistance at the end part, which can be seen by removing the rubber protection. (see fig. 1). The resistance is glued to the drip (see fig. 2).

Freezer separator Sat code 094485, complete with modified resistance, is managed as a replacement to solve the problem on products in use.

If the 40W resistance needs replacing it will be necessary to restore the sealing, located in the hole area, using silicone (see fig3 - ref A).

Also, to protect the separator from possible water penetration, silicone is used to protect the drip with polystyrene insulation at the back, and also the right corner, relevant to the wiring outlet is protected with silicone in the upper part.



n1030079: Modification of multiflow on Ariston and Indesit Opera-60 Total no frost

In June 2004 (serial no. 40604.0001), the Melano factory modified the multiflow fixing system to the shell on Ariston and Indesit Opera-60 Total No Frost fridge-freezers.

The inner wall of premodification models featured four square marks (20x20) in the central area for fixing the multiflow cover. The four marks have been eliminated and the wall only features the position for the holes.

Furthermore, the head of the four pins that house the fixing screws on the multiflow cover have been modified. Premodification items ended with an external diameter of 9 mm, whereas the current version has a diameter of 16.3 mm (see figures N1030079FIG1 and FIG2).

The new multiflow cover can be mounted on premodification models but not vice versa, paying attention not to overtighten the screws as the pins may break. If necessary, bush 039567 can be used as stopper.

The multiflow cover is managed as Kit to solve the problem, on products in use, of the formation of condensation on the vegetable basket due to the inflow of cold air from the freezer (see note N1030068).

Spare parts related to the replaced items will be available until stocks run out.

NB- Opera-70 fridge-freezers produced in the Manisa factory are not affected by this modification.

New parts

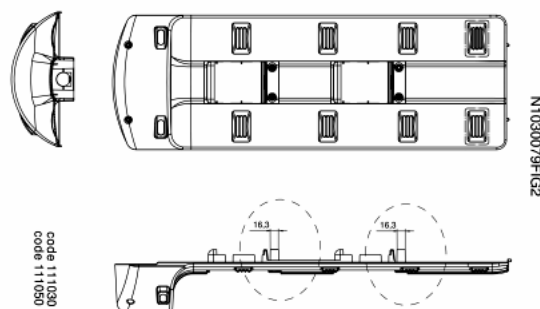
111030 - 4-way multiflow cover KIT (serial no. 40604.0001)

111050 - 3-way multiflow cover KIT (serial no. 40717.0001).

Parts replaced

094737 - 4-way multiflow cover KIT

094675 - 3-way multiflow cover KIT



n1030085: New freezer evaporator on Ariston/Indesit total no frost 60 cm fridge-freezers

In October 2004, the Melano factory modified the freezer evaporator and return tube on Ariston and Indesit Opera-60 total no frost fridge-freezers, in order to improve the connection.

Now the return tube is straight (outer diameter 6 mm), whereas previously it had a socket end 15 mm long (outer diameter 6.35 mm).

Before the modification, the coil tube on the freezer evaporator (outer diameter 8 mm) was straight, now it has a tapered end section 15 mm long (outer diameter 7.6 / inner 6.2 mm) to insert the return tube.

If the evaporator needs replacing, it will be necessary to connect it with a Lokring connector 7.5/6 NRAL50 (058213) or 7.5/6NRMS00 (058203).

If tightness is lost when the ring is removed, it will be necessary to use connector 8/6 NRAL50 (058214) or 8/6 NRNS00 (042050).

The new freezer evaporator can be fitted on premodification appliances, but once the ring is removed, the 6 mm outer diameter must be restored on the return tube (check that it is long enough to be able to use the pliers to connect the 7.5/6 ring).

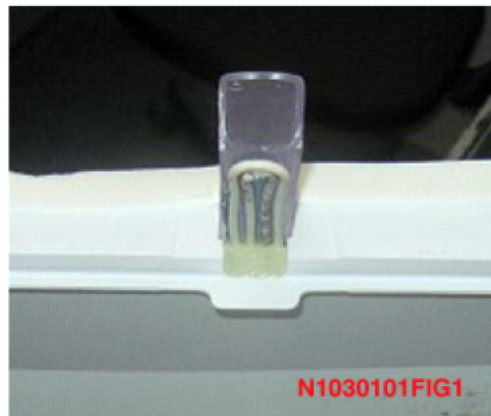
New parts

113845 - NOFROST FREEZER EVAPORATOR ASSEMBLY R600/R134a

Parts replaced

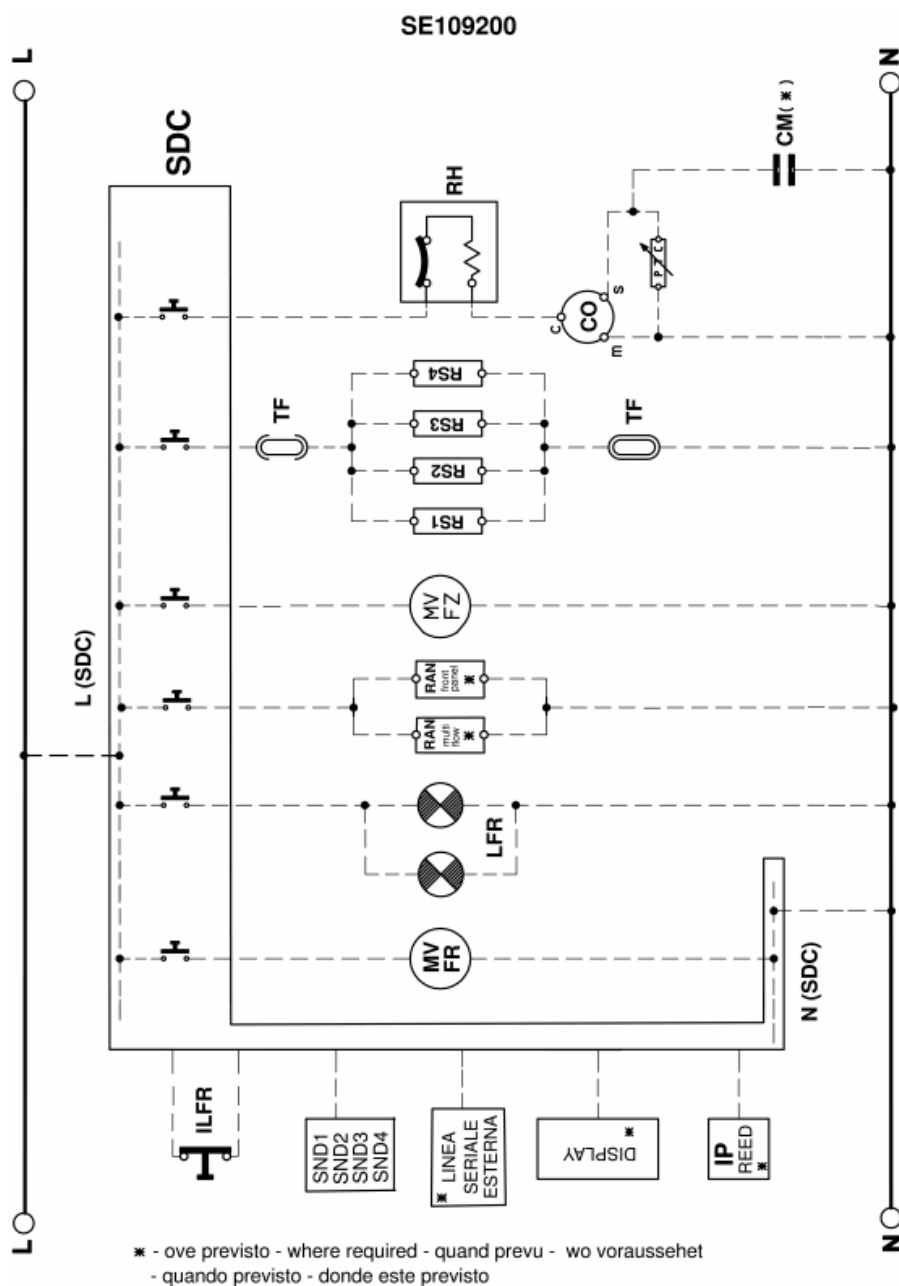
094667 - NOFROST FREEZER EVAPORATOR ASSEMBLY R600/R134a

n1030101:



Electric schemes and links

Cod. SE109200



Legend

Legend: SE109200

BZ	Audio freezer alarm	R	Heating resistance
C	Surge Capacitor	RA	Ammetrical relay
CM	Running capacitor	RAN	Heating element condensation
CO	Compressor	RFZ	Heating element condensation freezer
EV	Electrovalve	RH	Thermal relay
FA	Radio anti-trouble filter	RS	Defrosting resistance
IDS	Schackler with warning	RS1	No frost evaporator resistance
IEC	ON OFF loads switch	RS2	No frost drip pan resistance
IEFR	ON OFF refrigerator switch	RS3	Defrosting resistance
IETH	Thermostat exclusion	RS4	Defrosting resistance
ILFR	Push-button for fridge lamp/fan	RTA	Thermo actuator defrosting resistance
ILFZ	Push-button for freezer lamp/fan	SA	Allarm warning
ILI	Lamp switch	SC	Freezing warning
IP	Door switch	SDC	CONTROL CARD DIAGRAM
IR	Line switch	SL	Line warning
ISC	Warning light-freezing switch	SND1	SONDE VERDAMPFER KUEHLSCHRANK
IV	Fan-motor switch	SND2	SONDELUFTE FREEZER
IVFZ	Freezer fan-motor switch	SND3	AIR-PROBE REFRIGERATOR
L	Line	SND4	Sonda evaporator freezer
LFR	Fridge lamp	SND5	SONDA ARIA FREEZER VANO
LFZ	Freezer lamp	T	Erden
LI	Lighting lamp	TA1	Open thermo actuator
M	Mass/Eart symbol	TA2	Closed thermo actuator
MO	Terminal board	TC	Turbocooling
MT	Timer motor	TF	Fuse-thermic
MV	Fan motor	THA	Allarm thermostat
MVC	Compressor fan motor	THC	Freezer thermostat
MVCO	Compressor compartment fan	THDF	Refrigerator shackler thermostat
MVFR	Fan motor fridge	THI	Thermostat switch
MVFZ	Fan motor freezer	THR	Adjustable thermostat
N	Neutral	TP	Thermoprotector
PTC	PTC relay	TR	Transformer